

INNOVATION LEADS TO VALUE



SUNWARD

SWE 155F MEDIUM EXCAVATOR

◆ Total weight: 14.7 t

◆ Engine power: 90 kW / 2 200 rpm

◆ Bucket capacity: 0.6 m³



- ◆ The engine is powerful, reliable and durable with low fuel consumption.
- ◆ Mature and reliable imported hydraulic system is used, featuring better comprehensive capacity and high efficiency.
- ◆ Heavy-duty moving arm and bucket bar, and higher reliability.
- ◆ Chassis width: 2600mm, high stability, grease lubrication sealing crawler chain tracks are provided as standard, with long service life and low maintenance demand.
- ◆ The whole vehicle has large space for convenient maintenance activities.
- ◆ Full-function pipeline is provided as standard, and a variety of optional auxiliaries and bulldozers could be selected for more applications.

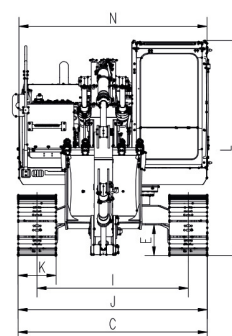
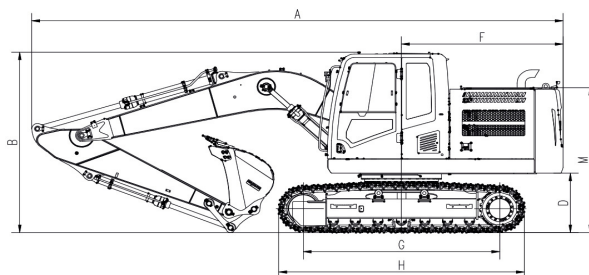
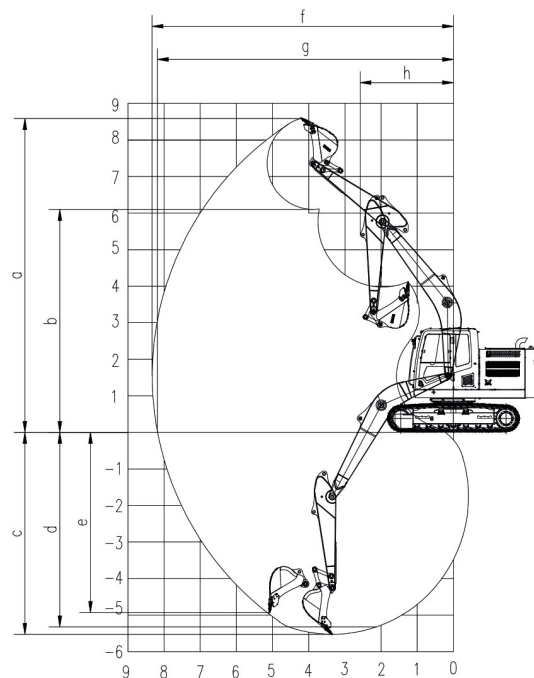


Parameters and performance of the main machine

Weight of whole machine		t	14.7
Standard bucket capacity		m³	0.6
Bucket digging force		kN	100
Arm digging force		kN	76
Max. drawbar pull		kN	115
Travel speed (Max/Min)		km/h	5.7 / 3.5
Gradeability		%	70
Ground pressure		kPa	45.04
Slewing speed		rpm	11
Engine	Brand		CUMMINS
	Model		F3.8
	Max. torque	N.m/rpm	500 / 1 500
	Displacement	L	3.8
	Power/Rotation speed	kw/rpm	90 / 2 200
Fuel tank capacity		L	300
Primary pump	Type		2 x variable plunger pump
	Flow rate	L/min	2 x 165
Pressure of main relief valve		MPa	31.4 / 34.3
Hydraulic oil tank capacity		L	185

Working range

	Boom length	mm	4 600
	Arm length	mm	2 500
a	Max. digging height	mm	8 600
b	Max. dumping height	mm	6 145
c	Max. digging depth	mm	5 530
d	Digging depth (2.44m; horizontal)	mm	5 320
e	Max. vertical digging depth	mm	4 930
f	Max. digging reach	mm	8 330
g	Max. digging reach at ground level	mm	8 185
h	Min. front slewing radius	mm	2 575



Outline dimensions

A	Total length	mm	8 270	H	Total track length	mm	3 650
B	Total height	mm	2 860	I	Track gauge	mm	1 990
C	Total width	mm	2 490	J	Track width	mm	2 490
D	Counterweight clearance	mm	940	K	Track shoe width	mm	500
E	Ground clearance	mm	410	L	Max. height of cab	mm	2 860
F	Platform tail slewing radius	mm	2 515	N	Uppercarriage width	mm	2 490
G	Length to center of rollers	mm	2 915				

◆ The above parameters may be different due to product upgrading.

